

## Light efficiency:

**100 Lumen/Watt**

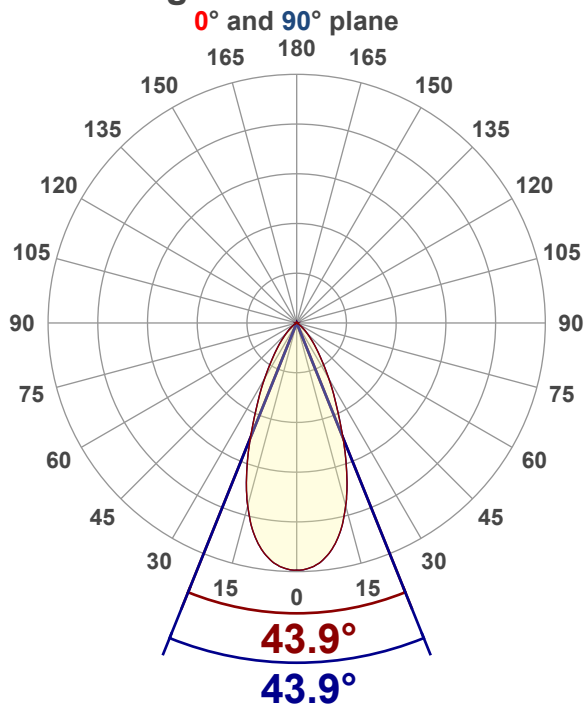
## Color temperature:

**2795 K**

## Light quality:

**CRI:92.7, R<sub>g</sub>:90.7, R<sub>f</sub>:99.7****P: 2 / V: - / F: 3****Output: 1135 lm****Peak: 1716 cd****Power: 11.4 W****Voltage: 120 V****Current: 0.098 A****PF: 0.97****THD: 16.57 %**

## Angular Distribution



Product name:

**RA35-12F-90WH - 2700K**

Test Date:

**12/2/2025**

Beam Angle (50% of the brightness of the centre):

**43.9°**

Field Angle (10% of the brightness of the centre):

**80.6°**

Cut Off Angle (2.5% of the brightness of the centre):

**104.8°**

## Beam Details

\*measured at centre of beam

Mounting Height (feet)\(meter)	Lux*	Footcandles*	Beam width (feet) / (meter)
4 ft / 1.2 m	1154 lx	107 fc	3.2 ft / 1 m
8 ft / 2.4 m	289 lx	27 fc	6.5 ft / 2 m
12 ft / 3.7 m	128 lx	12 fc	9.7 ft / 3 m
16 ft / 4.9 m	72 lx	7 fc	12.9 ft / 3.9 m
20 ft / 6.1 m	46 lx	4 fc	16.1 ft / 4.9 m

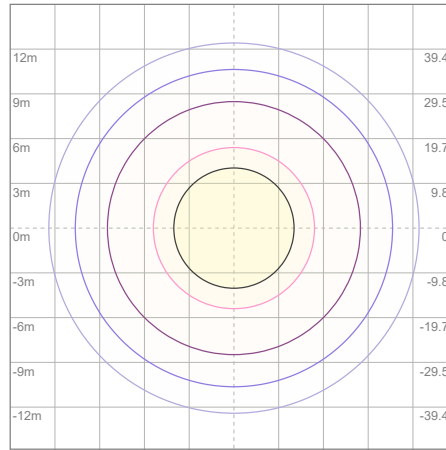
Beam center

## Photometric Testing Report

## Zonal Lumen Summary

Zone	Lumen	%Luminaire
0-30	829	73.04%
0-40	1008	88.81%
0-60	1119	98.59%
60-90	16.2	1.43%
70-100	4.76	0.42%
90-120	0.132	0.01%
0-90	1135	100.00%
90-180	0.559	0.05%
0-180	1135	100.00%

## ISO Lux Diagram



Lux at center:	184 lx
3%	5.52 lx
5%	9.20 lx
10%	18.40 lx
30%	55.20 lx
50%	92.00 lx

**Conditions:**  
Number of planes: 8  
Lux distribution on a surface when lamp is mounted at 3.05 meters from the surface.

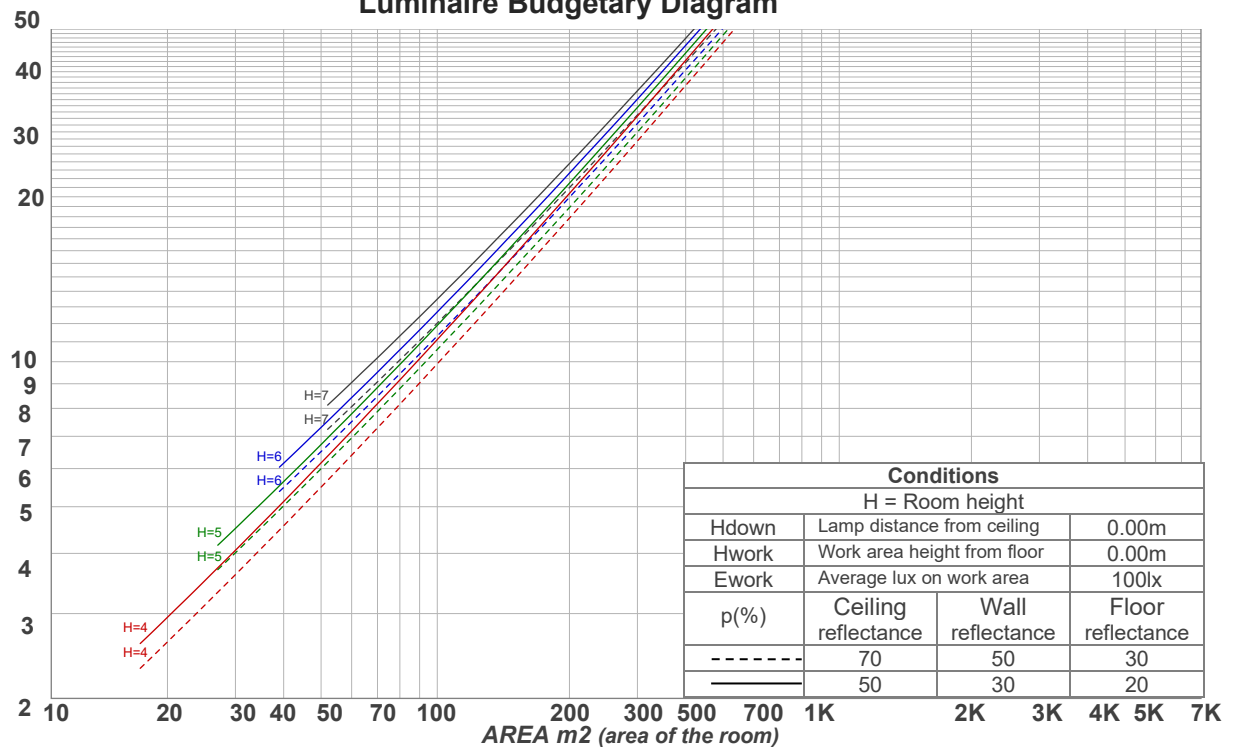
Mounting height: 3.05 meters (10 feet)

## Coefficients of Utilization

Ceiling reflectance	80				70				50			30			10			0
Wall reflectance	70	50	30	10	70	50	30	10	50	30	10	50	30	10	50	30	10	0
Floor reflectance	20	20	20	20	20	20	20	20	20	20	20	20	20	20	20	20	20	0
RCR	(RCR: Room Cavity Ratio) Room Values are expressed as percentage of Lumens delivered to the task surface																	
0	119	119	119	119	116	116	116	116	111	111	111	106	106	106	102	102	102	100
1	114	111	108	106	111	109	106	104	105	103	101	101	99	98	97	96	95	93
2	108	103	99	96	106	101	98	95	98	95	93	95	93	91	92	90	89	87
3	103	96	91	87	101	95	90	87	92	88	85	90	87	84	88	85	83	81
4	98	90	85	80	96	89	84	80	87	82	79	85	81	78	83	80	77	76
5	93	85	79	75	91	84	78	74	82	77	74	80	76	73	79	75	72	71
6	88	80	74	70	87	79	73	69	77	73	69	76	72	68	75	71	68	67
7	84	75	69	65	83	75	69	65	73	68	65	72	68	64	71	67	64	63
8	80	71	65	61	79	71	65	61	70	65	61	69	64	61	68	64	60	59
9	77	68	62	58	76	67	62	58	66	61	58	65	61	57	64	60	57	56
10	74	64	59	55	73	64	58	55	63	58	55	62	58	54	61	57	54	53

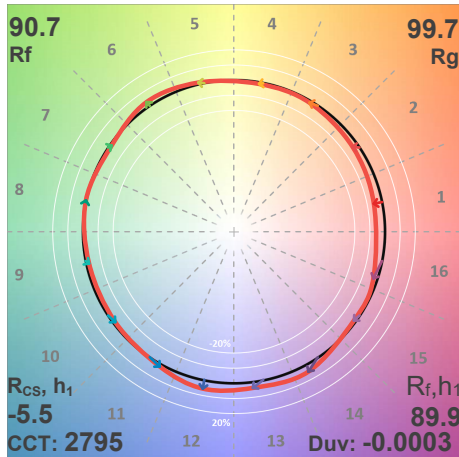
LAMPS (number of lamps)

## Luminaire Budgetary Diagram

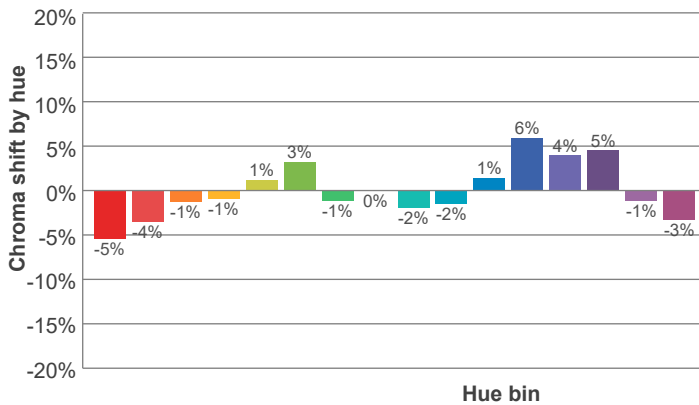
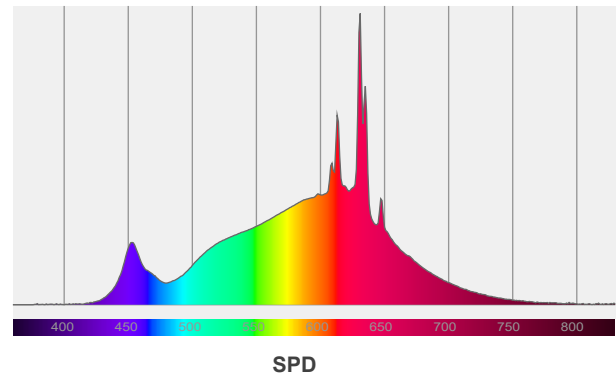
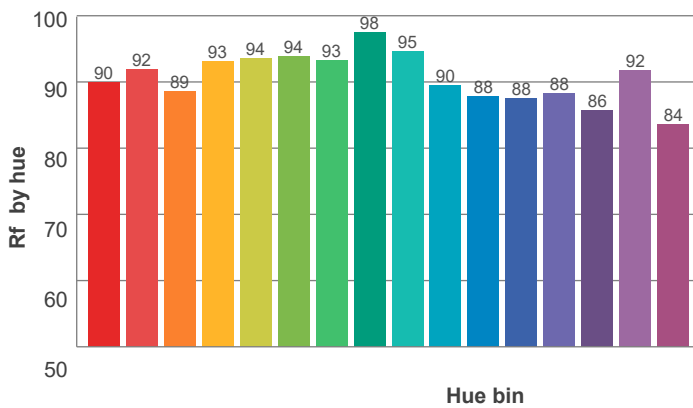
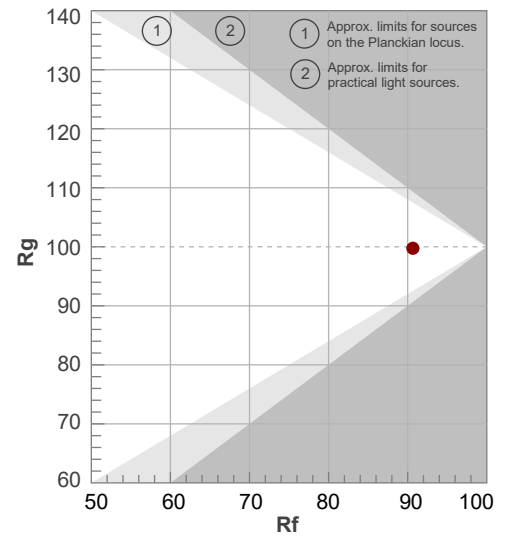


ANSI/IES TM-30-18

P: 2 / V: - / F: 3



Hue Bin	R <sub>f</sub>	Shifts (%)	
		Chroma	Hue
1	90	-5%	0%
2	92	-4%	3%
3	89	-1%	6%
4	93	-1%	3%
5	94	1%	4%
6	94	3%	0%
7	93	-1%	-2%
8	98	0%	-1%
9	95	-2%	2%
10	90	-2%	6%
11	88	1%	9%
12	88	6%	0%
13	88	4%	-8%
14	86	5%	-10%
15	92	-1%	-5%
16	84	-3%	-12%



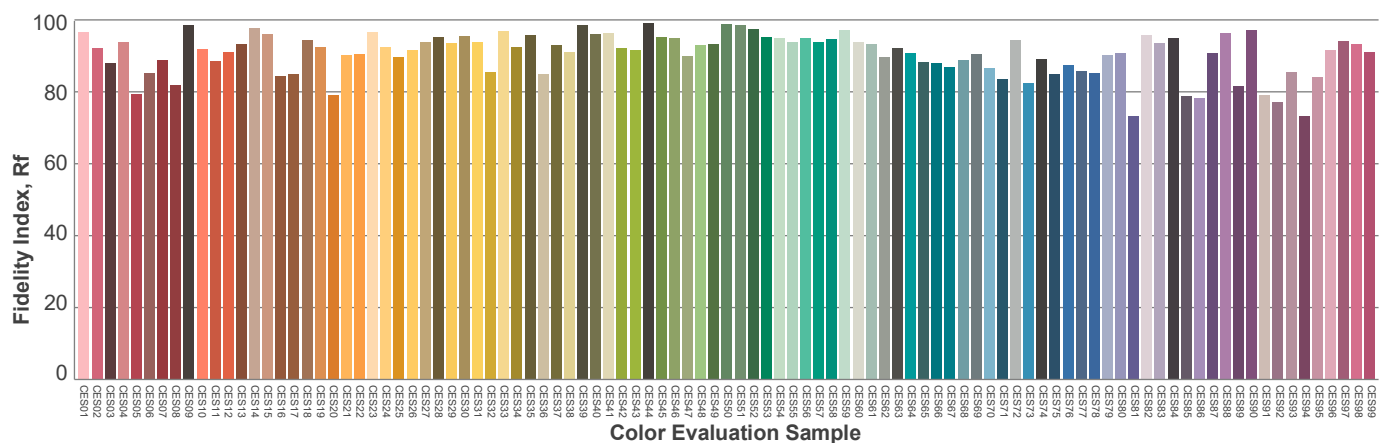
Red: 34.8%, Power=6.7mW

Blue: 8%, Power=5.3mW

Green: 25.8%, Power=13.2mW

UVA: 0%, Power=0.0mW

Dominant Wavelength: 584nm

1<sup>st</sup> Peak Wavelength: 631nm2<sup>nd</sup> Peak Wavelength: 613nm

### Glare Evaluation According to UGR

p Ceiling		70	70	50	50	30	70	70	50	50	30
p Walls		50	30	50	30	30	50	30	50	30	30
p Floor		20	20	20	20	20	20	20	20	20	20
Room size X      Y		Viewing direction at right angles to lamp axis					Viewing direction parallel to lamp axis				
2H	2H	20.3	21.0	20.5	21.2	21.4	20.3	21.0	20.5	21.2	21.4
	3H	20.2	21.0	20.6	21.2	21.4	20.2	21.0	20.6	21.2	21.4
	4H	20.2	20.9	20.6	21.1	21.4	20.2	20.9	20.6	21.1	21.4
	6H	20.2	20.8	20.5	21.1	21.5	20.2	20.8	20.5	21.1	21.5
	8H	20.2	20.7	20.5	21.1	21.4	20.2	20.7	20.5	21.1	21.4
	12H	20.1	20.7	20.4	21.0	21.4	20.1	20.7	20.4	21.0	21.4
4H	2H	20.1	20.8	20.5	21.0	21.3	20.1	20.8	20.5	21.0	21.3
	3H	20.2	20.8	20.5	21.1	21.5	20.2	20.8	20.5	21.1	21.5
	4H	20.1	20.6	20.5	21.1	21.6	20.1	20.6	20.5	21.1	21.6
	6H	20.1	20.6	20.6	21.0	21.3	20.1	20.6	20.6	21.0	21.3
	8H	20.0	20.5	20.5	20.9	21.2	20.0	20.5	20.5	20.9	21.2
	12H	20.0	20.4	20.5	20.8	21.2	20.0	20.4	20.5	20.8	21.2
8H	4H	20.0	20.5	20.5	20.9	21.2	20.0	20.5	20.5	20.9	21.2
	6H	20.0	20.3	20.5	20.8	21.3	20.0	20.3	20.5	20.8	21.3
	8H	20.0	20.3	20.5	20.8	21.4	20.0	20.3	20.5	20.8	21.4
	12H	19.9	20.2	20.5	20.7	21.3	19.9	20.2	20.5	20.7	21.3
12H	4H	20.0	20.4	20.5	20.8	21.2	20.0	20.4	20.5	20.8	21.2
	6H	20.0	20.3	20.5	20.8	21.4	20.0	20.3	20.5	20.8	21.4
	8H	19.9	20.2	20.5	20.7	21.3	19.9	20.2	20.5	20.7	21.3
Variation of the observer position for the luminaire distance S											
S = 1.0H		3.1 / -4.4					3.1 / -4.4				
S = 1.5H		5.4 / -6.0					5.4 / -6.0				
S = 2.0H		7.2 / -6.8					7.2 / -6.8				
Standard table		n/a					n/a				
Correction summand		n/a					n/a				
Corrected glare indices referring to 1135 lm total luminous flux											